

## Wing Nut

**Thread Type:** Metric - Coarse

**Thread Direction:** Right Hand

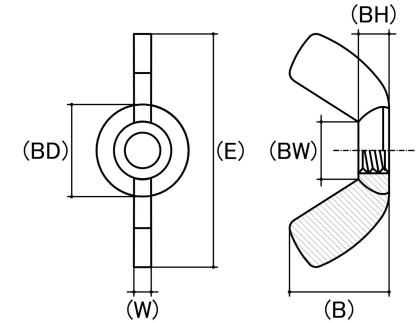
**Material:** Carbon Steel

**Class Grade:** Low Tensile Class 4.6

**Finish:** Mechanically Galvanised

**Corrosion Protection Level:** Excellent

**Standard:** UNI 5448



CAD drawings shown for graphic representation only.\*

| Size | Thread Pitch (mm) | Thread Type | Overall Nut Height (B) (mm) |       | Boss Diameter (BD) (mm) |       | Wing Span Range (E) (mm) |       | Wing Thickness (W) (mm) |      | Boss Height (BH) (mm) |       | Between Wings (BW) (mm) |       | sku (qfind) |
|------|-------------------|-------------|-----------------------------|-------|-------------------------|-------|--------------------------|-------|-------------------------|------|-----------------------|-------|-------------------------|-------|-------------|
|      |                   |             | Min                         | Max   | Min                     | Max   | Min                      | Max   | Min                     | Max  | Min                   | Max   | Min                     | Max   |             |
| M8   | 1.25              | Coarse      | 13.60                       | 15.50 | 12.90                   | 14.70 | 26.00                    | 32.00 | 4.30                    | 5.38 | 5.10                  | 5.70  | 8.00                    | 8.60  | 41W8MG      |
| M10  | 1.50              | Coarse      | 16.50                       | 18.50 | 16.20                   | 17.70 | 33.00                    | 37.00 | 5.00                    | 6.10 | 5.70                  | 6.30  | 10.30                   | 10.60 | 41W10MG     |
| M12  | 1.75              | Coarse      | 21.00                       | 25.40 | 21.80                   | 23.65 | 45.00                    | 50.00 | 6.60                    | 8.40 | 7.60                  | 8.40  | 13.10                   | 13.50 | 41WM12MG    |
| M16  | 2.00              | Coarse      | 28.00                       | 30.80 | 23.00                   | 26.00 | 58.00                    | 65.00 | 6.50                    | 8.30 | 10.50                 | 10.80 | 18.00                   | 19.00 | 41W16MG     |

**Disclaimer:**

Dimensional data and technical information was obtained from publically available sources and not acquired through standard agencies. It has been completed and compiled for reference purposes only; where discrepancies are found they are subject to change without notice. Bolt & Nut Australia makes no warranties or representations regarding the accuracy and validity of the compiled information and data. Contact the relevant standard authorities for accurate and detailed information.

\* CAD drawings may not reflect diameter, thread length or overall length.

© Bolt & Nut Australia Pty Ltd. All rights reserved.

Version: 18 Mar 2024